

# ERTRAC and the Future of Road Transport in Europe

Prof. Rudolf Kunze

Chairman ERTRAC The European Road Transport Research Advisory Council

## THE EUROPEAN ROAD TRANSPORT SYSTEM

- European road transport provides 20% GDP contribution and employs 9% of the EU workforce
- Significant future growth of goods and people transport
- The industry faces strong global competition
- It is a highly complex system with many different stakeholders

## THE EUROPEAN ROAD TRANSPORT SYSTEM IS NOT SUSTAINABLE

- Insufficient progress on greenhouse gases
- Urban airquality issues not fully understood
- Road Safety road map off-track
- Congestion is an increasing concern
- Over-regulated sector with significant competitiveness issues

It will face significant increase in goods & people transport, urgency for atmospheric stabilisation, growing health concerns and growing energy dependency, that's why  
... *Business as usual is not good enough!*

## A SUSTAINABLE ROAD TRANSPORT SYSTEM

- Will deliver on our societal, economical and ecological needs
- It has to carefully balance innovation, policies and market needs with the strong emphasis on the European citizens

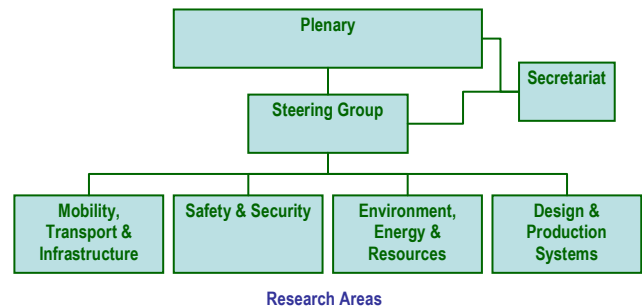
## ...WHY ERTRAC

- The challenges are very complex, with many different stakeholders involved
- A forum with a "total system" view, all stakeholders involved is needed in an open and transparent process, consensing on the way forward
- Public/ private and European/ national research activities need to be aligned, with innovation, policies, standards to go hand-in-hand

## ERTRAC MEMBERS

- Official launch 2003 with all major stakeholder groups and public bodies involved:
  - Automotive suppliers
  - Research providers
  - Energy/ fuel supply
  - Automotive manufacturers
  - Service providers
  - Cities and regions
  - Users/ consumers
  - EU and national bodies
  - Road infrastructures
  - Intelligent transport systems

## ERTRAC STRUCTURE



## ERTRAC'S MISSION

- Provide major benefits in terms of research efficiency, quality of results and reduced time to application of innovation
- Take a holistic and integrated view on road transport issues
- Explore opportunities, make specific recommendations for implementations

## ERTRAC'S OPPORTUNITIES

- Recommend/ initiate large cross-stakeholder research topics
- Identify international cooperation opportunities
- Consens priorities with all stakeholders
- Align EU/ national agendas and programs
- Include technologies, policies, standards, etc.
- Monitoring progress and adjusting research agenda
- Providing a platform for continuous alignment and cooperation

## ERTRAC PROCESS



## THE ERTRAC RESEARCH FRAMEWORK

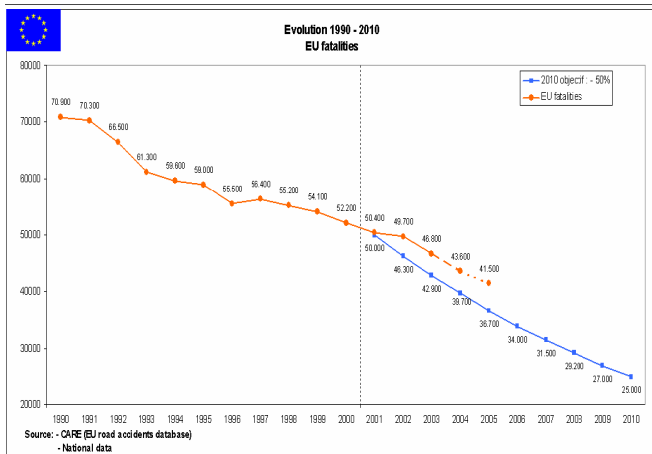
The ERTRAC Research Framework covers

- Research targets
- Technology and policy options
- Future research needs for
  - Mobility, Transport, Infrastructure
  - Environment, Energy and Resources
  - Safety & Security
  - Design & Production Systems
- Research impact and effectiveness
- Priorities for the first FP7 call
- Cross-stakeholder topics (in progress)

### EXAMPLE: SAFETY & SECURITY

- Road Safety context
  - Absence of fatalities and injuries
  - (EU target: road accident fatalities by 50% in 2010 as compared to 2001)
- Security context
  - Absence of danger, injury, anxiety, fear (from terrorism, crime, natural disasters, hackers, ...)
  - Katrina: critical infrastructure, communications, ITS to manage evacuation, ITS to support disaster relief ... all failed

### THE EU SAFETY FORECAST IS OFF-TRACK



### Example: Safety & Security – 7 Focal areas

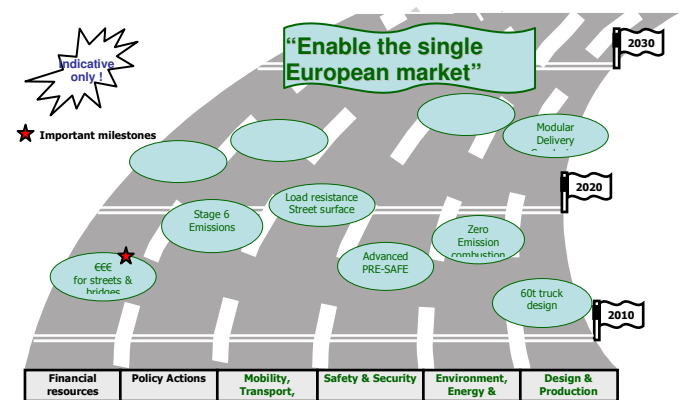
- Accidentology and Impact Assessment
- Preventive and Protective vehicle systems including Vulnerable Road Users
- Co-operative Systems
- Post-accident & Emergency Management
- Human Factors
- Road Engineering and Network Operations

- Security

### ERTRAC RESEARCH FRAMEWORK NEXT STEPS – 6 THEMATIC PRIORITIES DEFINED

- Enable the single European market
- Ensure sustainable urban mobility
- The informed driver
- Road transport safety
- Sustainable energy for road transport
- Competitive EU production in a global context

### ERTRAC RESEARCH FRAMEWORK NEXT STEPS – BUILD THE ROAD MAPS



### CONCLUSIONS

- ERTRAC process widely supported
- EU Technology Platform criteria fully met
- Significant progress was made
- Emergence of national Road Transport Platforms
- Openness, transparency, alignment are critical
- Agreement on specific road maps crucial
- Funding and policy strategies to support technology roadmaps